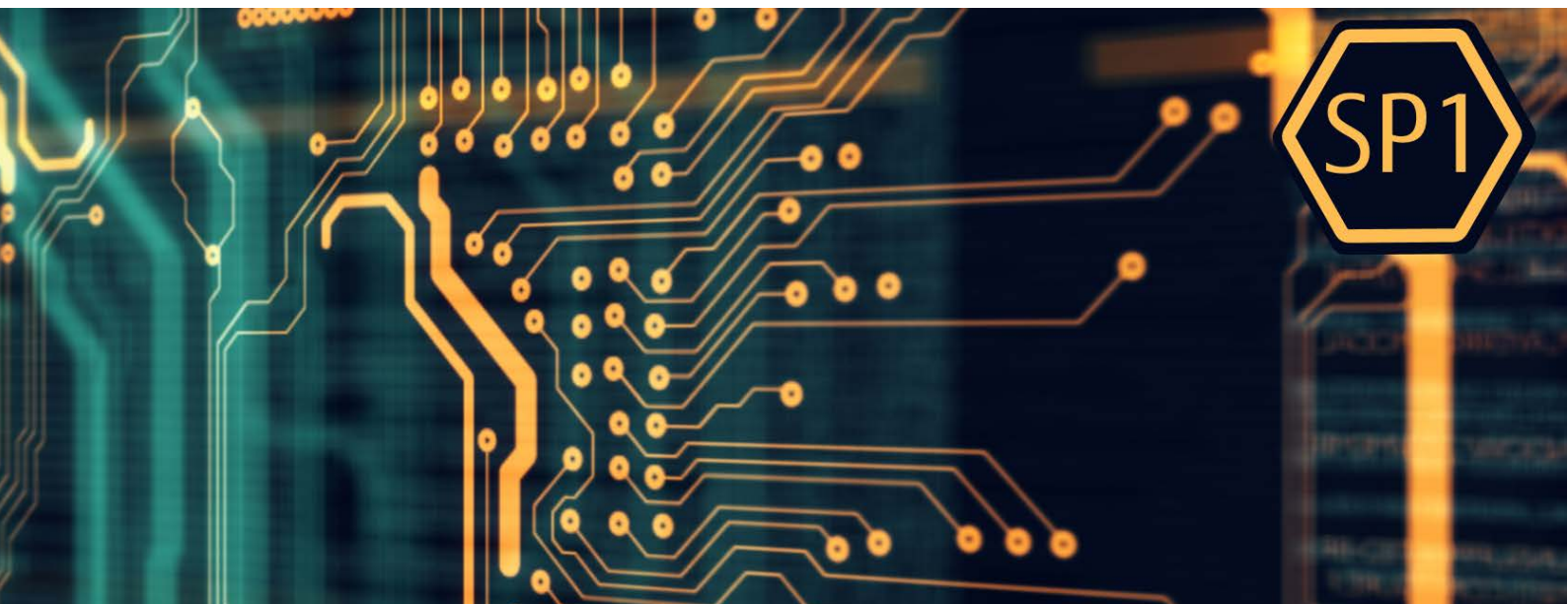


FUJITSU Enterprise Postgres 13



Program Updates

[Linux >](#)

[Windows >](#)

FUJITSU Enterprise Postgres 13



Program Updates *(Linux)*

Linux

J2UL-2672-02ENZO(00)

August 2021

Preface

This document explains the updates that have been fixed at this version.

The contents of this document are subject to change without notice.

Notations

The status for each edition is shown in the following table.

P number	Update summary	AE	SE
Number that uniquely identifies the update	Summary of update details	Symbol indicating the fixed status	

AE

Indicates Advanced Edition.

SE

Indicates Standard Edition.

Symbol

Indicates the incorporated status for each edition.

Y: Fixed

-: Not relevant to this product

Export restrictions

Exportation/release of this document may require necessary procedures in accordance with the regulations of your resident country and/or US export control laws.

Issue date and version

Edition 2.0: August 2021 Edition 1.0: April 2021

Copyright

Copyright 2020-2021 FUJITSU LIMITED

Chapter 1 Program Updates

This version incorporates the following fixes:

- PostgreSQL 13
- PostgreSQL 13.1
- PostgreSQL 13.2
- PostgreSQL 13.3



See

Refer to the PostgreSQL Global Development Group website for information on the updates implemented in the following releases:

[PostgreSQL 13]

<https://www.postgresql.org/docs/13/release-13.html>

[PostgreSQL 13.1]

<https://www.postgresql.org/docs/13/release-13-1.html>

[PostgreSQL 13.2]

<https://www.postgresql.org/docs/13/release-13-2.html>

[PostgreSQL 13.3]

<https://www.postgresql.org/docs/13/release-13-3.html>

In addition, issues that occurred in previous versions are also fixed.

Refer to the following for details of the program fixes included in this version and level.

- [FUJITSU Enterprise Postgres 13 SP1 Program Updates](#)
- [FUJITSU Enterprise Postgres 13 Program Updates](#)

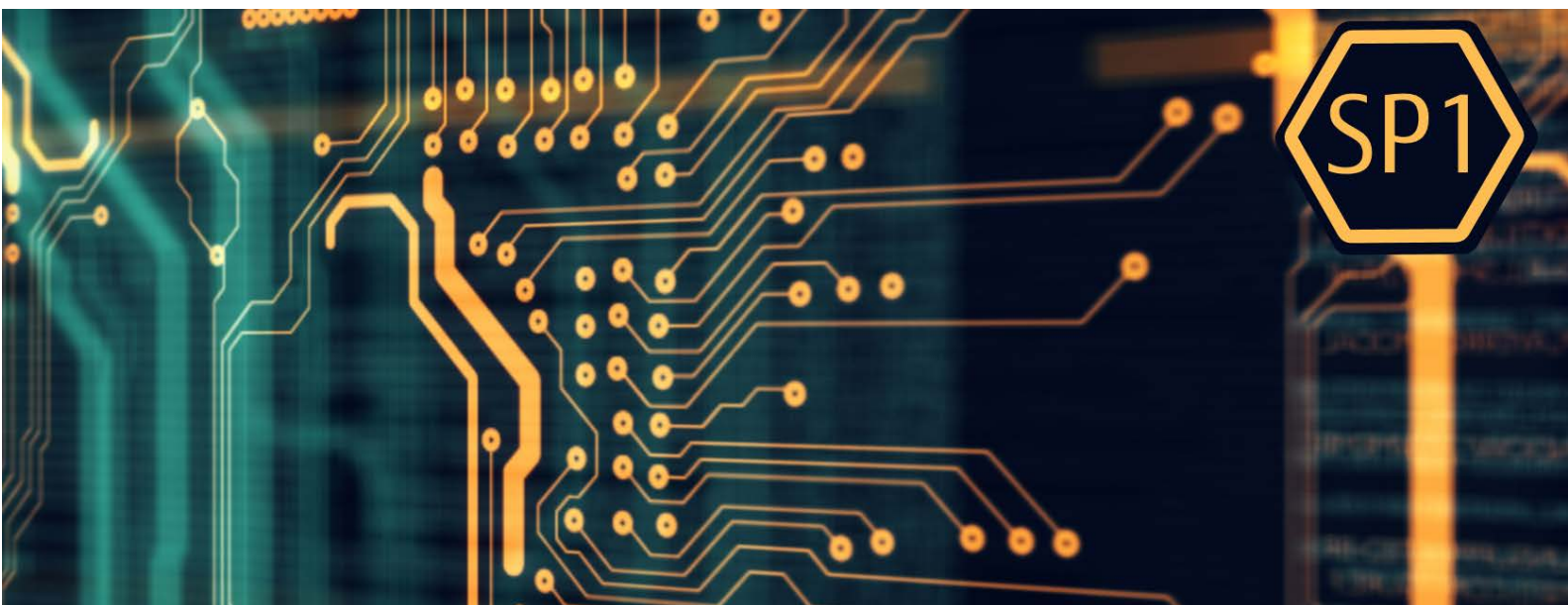
FUJITSU Enterprise Postgres 13 SP1 Program Updates

P number	Update summary	AE	SE
PH20157	If FUJITSU Enterprise Postgres fails to install and then is installed again with the same destination, an error message is output.	Y	Y
PH20356	Propagate fault fixes absorbed by PostgreSQL 13.2 or 13.3 to Fujitsu Enterprise Postgres.	Y	Y

FUJITSU Enterprise Postgres 13 Program Updates

P number	Update summary	AE	SE
PH14670	Memory access violations can occur when executing SQL statements from embedded SQL COBOL applications and receiving string results in host variables.	Y	Y
PH16199	If you used WebAdmin to create a synchronous standby instance, WebAdmin might incorrectly set the application name in the parameter synchronous_standby_names.	Y	Y
PH16471	Embedded SQL applications that use the COBOL language may not be able to retrieve data from the database.	Y	Y
PH16473	Executing SQL using outer join operators(+) may produce errors.	Y	Y
PH16631	Transaction log duplexing may stop.	Y	Y
PH16646	During failover operation in conjunction with PRIMECLUSTER, it may not switch normally.	Y	Y
PH17742	Indexes on unlogged tables can become corrupted, causing errors when referencing or updating tables.	Y	Y
PH17860	Precompiling an embedded SQL COBOL application using the DO in SQL statement may fail.	Y	Y
PH18047	If the data masking is used, results may not be masked.	Y	Y
PH18746	The Global Meta Cache feature may cause the database to go down.	Y	-
PH18945	The Global Meta Cache feature may cause the database to become unresponsive.	Y	-
PH18957	In ECOBPG, add the feature to use host variables of type bytea.	Y	Y
PH18958	The Global Meta Cache feature can degrade database performance.	Y	-
PH18962	When using JIT compilation, only a fixed version of LLVM is available. As a result, only the desupported version may be available.	Y	Y
PH19008	If pgaudit is enabled and you execute a function or procedure defined in PL/pgSQL, you may get an error.	Y	-
PH19011	When you create an instance using WebAdmin, the database server kernel is set to an incorrect value.	Y	Y
PH19013	If pgaudit is enabled and you execute a function or procedure defined in PL/pgSQL, some parameters are not output to the audit log.	Y	-
PH19081	Adds a feature to the Global Meta Cache feature that limits the amount of metacache cached in memory per process.	Y	-
PH19111	When using the Connection Manager, if you attempt to connect to the database using the password entered in the password file, you will receive an authentication error.	Y	-
PH19182	The conmgr process may abend with the following message: could not listen for socket: Too many open files	Y	-
PH19184	When you disconnect from a database using the Connection Manager, you may experience a missing connection to the conmgr process and a memory leak.	Y	-
PH19536	In the connection switch feature of .NET Data Provider, it may not be possible to connect to the new primary server after failover.	Y	Y
PH19544	When using the connection switch feature of .NET Data Provider, the connection may not be pooled.	Y	Y
PH19591	Incorrect value for category column in pg_settings view.	Y	Y
PH19629	When it is set to output the audit log for DML operation to the table or index, the audit log for DML operation for the parent table which is a partitioned table is not output.	Y	-
PH19815	OSS that is not supported by FUJITSU Enterprise Postgres may not be available.	Y	Y
PH19839	The automatic start / stop procedure when using the rc script is not supported, but it is described in the manual.	Y	Y
PH19853	If the installation of FUJITSU Enterprise Postgres fails, the installed packages will not be uninstalled.	Y	Y
PH19861	When you start the Mirroring Controller, both servers may temporarily become the primary server.	Y	-

FUJITSU Enterprise Postgres 13



Program Updates *(Windows)*

Windows

B1WS-1437-02ENZO(00)

August 2021

Preface

This document explains the updates that have been fixed at this version.

The contents of this document are subject to change without notice.

Notations

The status for each edition is shown in the following table.

P number	Update summary	AE	SE
Number that uniquely identifies the update	Summary of update details	Symbol indicating the fixed status	

AE

Indicates Advanced Edition.

SE

Indicates Standard Edition.

Symbol

Indicates the incorporated status for each edition.

Y: Fixed

-: Not relevant to this product

Export restrictions

Exportation/release of this document may require necessary procedures in accordance with the regulations of your resident country and/or US export control laws.

Issue date and version

Edition 2.0: August 2021 Edition 1.0: April 2021

Copyright

Copyright 2020-2021 FUJITSU LIMITED

Chapter 1 Program Updates

This version incorporates the following fixes:

- PostgreSQL 13
- PostgreSQL 13.1
- PostgreSQL 13.2
- PostgreSQL 13.3



See

Refer to the PostgreSQL Global Development Group website for information on the updates implemented in the following releases:

[PostgreSQL 13]

<https://www.postgresql.org/docs/13/release-13.html>

[PostgreSQL 13.1]

<https://www.postgresql.org/docs/13/release-13-1.html>

[PostgreSQL 13.2]

<https://www.postgresql.org/docs/13/release-13-2.html>

[PostgreSQL 13.3]

<https://www.postgresql.org/docs/13/release-13-3.html>

In addition, issues that occurred in previous versions are also fixed.

Refer to the following for details of the program fixes included in this version and level.

- [FUJITSU Enterprise Postgres 13 SP1 Program Updates](#)
- [FUJITSU Enterprise Postgres 13 Program Updates](#)

FUJITSU Enterprise Postgres 13 SP1 Program Updates

P number	Update summary	AE	SE
PH20157	If FUJITSU Enterprise Postgres fails to install and then is installed again with the same destination, an error message is output.	Y	Y
PH20356	Propagate fault fixes absorbed by PostgreSQL 13.2 or 13.3 to Fujitsu Enterprise Postgres.	Y	Y

FUJITSU Enterprise Postgres 13 Program Updates

P number	Update summary	AE	SE
PH14670	Memory access violations can occur when executing SQL statements from embedded SQL COBOL applications and receiving string results in host variables.	Y	Y
PH16199	If you used WebAdmin to create a synchronous standby instance, WebAdmin might incorrectly set the application name in the parameter synchronous_standby_names.	Y	Y
PH16471	Embedded SQL applications that use the COBOL language may not be able to retrieve data from the database.	Y	Y
PH16473	Executing SQL using outer join operators(+) may produce errors.	Y	Y
PH16631	Transaction log duplexing may stop.	Y	Y
PH17742	Indexes on unlogged tables can become corrupted, causing errors when referencing or updating tables.	Y	Y
PH17860	Precompiling an embedded SQL COBOL application using the DO in SQL statement may fail.	Y	Y
PH18047	If the data masking is used, results may not be masked.	Y	Y
PH18746	The Global Meta Cache feature may cause the database to go down.	Y	-
PH18945	The Global Meta Cache feature may cause the database to become unresponsive.	Y	-
PH18957	In ECOBPG, add the feature to use host variables of type bytea.	Y	Y
PH18958	The Global Meta Cache feature can degrade database performance.	Y	-
PH19008	If pgaudit is enabled and you execute a function or procedure defined in PL/pgSQL, you may get an error.	Y	-
PH19013	If pgaudit is enabled and you execute a function or procedure defined in PL/pgSQL, some parameters are not output to the audit log.	Y	-
PH19081	Adds a feature to the Global Meta Cache feature that limits the amount of metacache cached in memory per process.	Y	-
PH19536	In the connection switch feature of .NET Data Provider, it may not be possible to connect to the new primary server after failover.	Y	Y
PH19544	When using the connection switch feature of .NET Data Provider, the connection may not be pooled.	Y	Y
PH19591	Incorrect value for category column in pg_settings view.	Y	Y
PH19629	When it is set to output the audit log for DML operation to the table or index, the audit log for DML operation for the parent table which is a partitioned table is not output.	Y	-
PH19815	OSS that is not supported by FUJITSU Enterprise Postgres may not be available.	Y	Y
PH19839	The automatic start / stop procedure when using the rc script is not supported, but it is described in the manual.	Y	Y
PH19861	When you start the Mirroring Controller, both servers may temporarily become the primary server.	Y	-