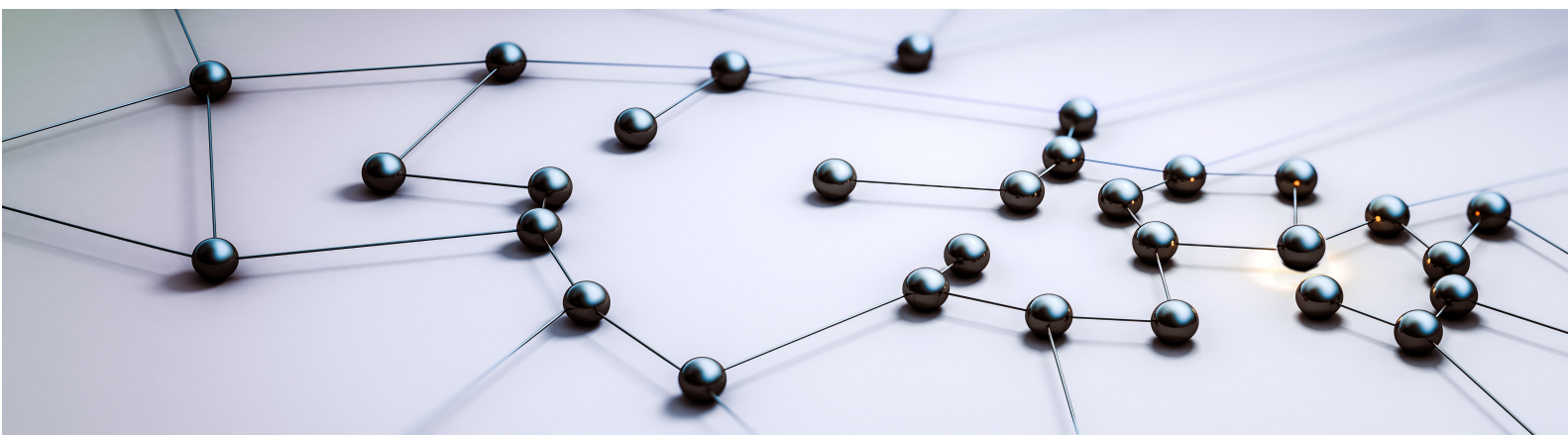


FUJITSU Enterprise Postgres 10



Documentation Roadmap

Windows/Solaris/Linux

J2UL-2376-01ENZO(00)
August 2018

Preface

Purpose of this document

This document is intended for users of "FUJITSU Software Enterprise Postgres" (hereafter referred to as "FUJITSU Enterprise Postgres"), and explains how to read the manuals.

Structure of this document

The structure and content of this manual is shown below.

[Chapter 1 How to Read the Manuals](#)

This section explains the notational conventions in FUJITSU Enterprise Postgres manuals.

[Chapter 2 Trademarks](#)

This section explains the trademarks.

Export restrictions

Exportation/release of this document may require necessary procedures in accordance with the regulations of your resident country and/or US export control laws.

Issue date and version

Edition 1.0: August 2018

Copyright

Copyright 2015-2018 FUJITSU LIMITED

Contents

Chapter 1 How to Read the Manuals.....	1
1.1 Intended Products.....	1
1.2 Abbreviations of Manual Titles.....	1
1.3 System of Manuals and How to Use the Manuals.....	1
1.3.1 System of Manuals.....	2
1.3.2 Documentation Road Map.....	3
1.4 Notational Conventions in the Manuals.....	4
1.4.1 Platform-specific Information.....	5
1.4.2 Abbreviation of Product Names.....	5
1.4.3 FUJITSU Enterprise Postgres Conventions.....	7
1.4.3.1 Server.....	7
1.4.3.2 Client.....	7
1.4.4 Abbreviations for Specific Terms.....	8
1.4.5 Symbol Convention.....	8
1.5 Notes about Manuals.....	8
Chapter 2 Trademarks.....	9

Chapter 1 How to Read the Manuals

The FUJITSU Enterprise Postgres manuals use certain notational conventions and rules. Pay attention to these conventions and rules when reading the FUJITSU Enterprise Postgres manuals.

1.1 Intended Products

The manuals apply to the following products:

- FUJITSU Enterprise Postgres Advanced Edition
- FUJITSU Enterprise Postgres Standard Edition

1.2 Abbreviations of Manual Titles

The following tables list abbreviations of the titles of manuals for FUJITSU Enterprise Postgres as they appear in the manuals.

Formal manual title	Abbreviation in FUJITSU Enterprise Postgres manuals
FUJITSU Enterprise Postgres Release Notes	Release Notes
FUJITSU Enterprise Postgres General Description	General Description
FUJITSU Enterprise Postgres Installation and Setup Guide for Server	Installation and Setup Guide for Server
FUJITSU Enterprise Postgres Installation and Setup Guide for Client	Installation and Setup Guide for Client
FUJITSU Enterprise Postgres Installation and Setup Guide for Server Assistant	Installation and Setup Guide for Server Assistant
FUJITSU Enterprise Postgres Operation Guide	Operation Guide
FUJITSU Enterprise Postgres Security Operation Guide	Security Operation Guide
FUJITSU Enterprise Postgres Cluster Operation Guide (Database Multiplexing)	Cluster Operation Guide (Database Multiplexing)
FUJITSU Enterprise Postgres Cluster Operation Guide (PRIMECLUSTER)	Cluster Operation Guide (PRIMECLUSTER)
FUJITSU Enterprise Postgres Application Development Guide	Application Development Guide
FUJITSU Enterprise Postgres Reference	Reference
FUJITSU Enterprise Postgres Java API Reference	Java API Reference
FUJITSU Enterprise Postgres Npgsql API Reference	Npgsql API Reference
FUJITSU Enterprise Postgres Glossary	Glossary
FUJITSU Enterprise Postgres Messages	Messages
PostgreSQL 10.3 Documentation	PostgreSQL Documentation

1.3 System of Manuals and How to Use the Manuals

This section describes the system of manuals for FUJITSU Enterprise Postgres.

1.3.1 System of Manuals

FUJITSU Enterprise Postgres manuals

The table below shows the manuals on FUJITSU Enterprise Postgres.

Use/Purpose	Manual title	Content	When to read
Deciding whether to upgrade the product.	Release Notes	Overview of upgraded features and incompatibility information.	When learning about features upgraded from earlier versions and incompatibility information.
Acquiring an overview of the product and the basic information required for work and operation.	General Description	Description of all available functions associated with each intended purpose or use, and screenshots of operations.	When learning basic information and restrictions that system engineers and operators must know to actually operate the product.
Installing and setting up FUJITSU Enterprise Postgres correctly to enable its use.	Installation and Setup Guide for Server	Procedure for installing and setting up FUJITSU Enterprise Postgres.	When installing and setting up FUJITSU Enterprise Postgres.
Installing the FUJITSU Enterprise Postgres client function correctly to enable its use.	Installation and Setup Guide for Client	Installing the FUJITSU Enterprise Postgres client function.	When installing the FUJITSU Enterprise Postgres client function.
Installing and setting up the FUJITSU Enterprise Postgres Server Assistant.	Installation and Setup Guide for Server Assistant	Procedure for installing and setting up the FUJITSU Enterprise Postgres Server Assistant.	When installing and setting up the FUJITSU Enterprise Postgres Server Assistant.
Operating and managing FUJITSU Enterprise Postgres.	Operation Guide	Description of the tasks required in FUJITSU Enterprise Postgres management and operation.	When learning how to operate and manage the databases.
Performing security operation.	Security Operation Guide	Description of the tasks required for security operations.	When using security features and performing security operation in FUJITSU Enterprise Postgres.
Performing switchover using database multiplexing mode.	Cluster Operation Guide (Database Multiplexing)	Description of the tasks required for database multiplexing operation.	When using database multiplexing mode to create operating environment for switchover and perform it.
Performing failover using PRIMECLUSTER.	Cluster Operation Guide (PRIMECLUSTER)	Description of how to set up failover and perform operations using PRIMECLUSTER.	When performing failover using PRIMECLUSTER.
Applications using the interface provided by FUJITSU Enterprise Postgres.	Application Development Guide	Procedure for creating an application using embedded SQL, JDBC driver, ODBC	When developing an application using the interface provided by FUJITSU Enterprise Postgres.

Use/Purpose	Manual title	Content	When to read
		driver, and .NET Data Provider.	
Usage of FUJITSU Enterprise Postgres commands.	Reference	Description of the FUJITSU Enterprise Postgres commands expanded on from PostgreSQL.	When learning FUJITSU Enterprise Postgres command functions, options, and examples of use.
Learning the syntax of the JDBC API.	Java API Reference	Description of the syntax of the JDBC API.	When learning the syntax of the JDBC API.
Learning the syntax of the Npgsql API.	Npgsql API Reference	Description of the syntax of the Npgsql API.	When learning the syntax of the Npgsql API.
Learning the meaning of the terms of FUJITSU Enterprise Postgres.	Glossary	Description of the terms used in the FUJITSU Enterprise Postgres manuals.	When checking the meaning of terms used in the FUJITSU Enterprise Postgres manuals.
Referring to messages from FUJITSU Enterprise Postgres and taking measures for them.	Messages	Description of each message and description of any measures to be taken for it.	When finding out the specific measures for dealing with messages from FUJITSU Enterprise Postgres.

PostgreSQL manual

The table below shows the manual on PostgreSQL-compatible features.

Use/Purpose	Manual title	Content	When to read
Learning about PostgreSQL features.	PostgreSQL Documentation	Official PostgreSQL documentation. Explains all features officially supported by the relevant version of PostgreSQL.	When learning how to use PostgreSQL.

1.3.2 Documentation Road Map

This section provides a documentation roadmap, broken down by user role.

Database administrator

The database administrator is a user who performs FUJITSU Enterprise Postgres installation and setup, and who operates and monitors the database.

Refer to the manuals in the table below, according to purpose:

	Purpose	Manual name
Required reading	To learn about upgraded features and incompatibility information	Release Notes

	Purpose	Manual name	
	To read an overview of the software	General Description	
	To perform installation and setup	Installation and Setup Guide for Server	
	To install the Server Assistant	Installation and Setup Guide for Server Assistant	
	Operation		Operation Guide
			Security Operation Guide
			Cluster Operation Guide (Database Multiplexing)
			Cluster Operation Guide (PRIMECLUSTER)
	Reference		Reference
			Messages
			Glossary
Refer to as required	To learn about PostgreSQL features	PostgreSQL Documentation	

Application developer

The application developer is a user who defines the database and develops applications.

Refer to the manuals in the table below, according to purpose:

	Purpose	Manual name	
Required reading	To read an overview of the software	General Description	
	To perform installation and setup	Installation and Setup Guide for Client	
	To define a database	Operation Guide	
	To develop applications		Application Development Guide
			Java API Reference
			Npgsql API Reference
	Reference		Messages
Glossary			
Refer to as required	To learn about PostgreSQL features	PostgreSQL Documentation	

1.4 Notational Conventions in the Manuals

Manual titles and product names in the manual are abbreviated.

This section explains the notational conventions for abbreviations and platform-specific information in the manuals.

1.4.1 Platform-specific Information

Even manuals whose title has a platform name contains content common to all the platforms supported by FUJITSU Enterprise Postgres. In such cases, the platform-specific information is marked as shown below. Refer to only the necessary information.

S

Solaris

Indicates content concerning the Oracle Solaris.

L

Linux

Indicates content concerning Linux.

W

Windows(R)

Indicates content concerning Windows(R).

1.4.2 Abbreviation of Product Names

The following table lists abbreviations of the names of products related to FUJITSU Enterprise Postgres as they appear in the manuals.

Formal name	Abbreviation
Oracle Solaris 10 and Oracle Solaris 11	Solaris
Red Hat(R) Enterprise Linux(R) 6 (for Intel64), Red Hat(R) Enterprise Linux(R) 6 (for x86), Red Hat(R) Enterprise Linux(R) 7 and SUSE Linux Enterprise Server 12	Linux
Red Hat(R) Enterprise Linux(R) 6 (for Intel64)	RHEL6(Intel64)
Red Hat(R) Enterprise Linux(R) 6 (for x86)	RHEL6(x86)
Red Hat(R) Enterprise Linux(R) 6 (for Intel64) and Red Hat(R) Enterprise Linux(R) 6 (for x86)	RHEL6
Red Hat(R) Enterprise Linux(R) 7	RHEL7
SUSE Linux Enterprise Server 12	SLES 12
Windows(R) 7 Home Premium, Windows(R) 7 Professional, Windows(R) 7 Enterprise and Windows(R) 7 Ultimate	Windows(R) 7
Windows(R) 8.1, Windows(R) 8.1 Pro and Windows(R) 8.1 Enterprise	Windows(R) 8.1
Windows(R) 10 Home, Windows(R) 10 Education, Windows(R) 10 Pro and Windows(R) 10 Enterprise	Windows(R) 10
Microsoft(R) Windows Server(R) 2008 Datacenter, Microsoft(R) Windows Server(R) 2008 Enterprise, Microsoft(R) Windows Server(R) 2008 Standard, Microsoft(R) Windows(R) Web Server 2008, Microsoft(R) Windows Server(R) 2008 Datacenter without Hyper-V, Microsoft(R) Windows Server(R) 2008 Enterprise without Hyper-V and Microsoft(R) Windows Server(R) 2008 Standard without Hyper-V	Windows Server(R) 2008

Formal name	Abbreviation
Microsoft(R) Windows Server(R) 2008 Datacenter, Microsoft(R) Windows Server(R) 2008 Enterprise, Microsoft(R) Windows Server(R) 2008 Standard, Microsoft(R) Windows(R) Web Server 2008, Microsoft(R) Windows Server(R) 2008 Datacenter without Hyper-V, Microsoft(R) Windows Server(R) 2008 Enterprise without Hyper-V and Microsoft(R) Windows Server(R) 2008 Standard without Hyper-V	Windows Server(R) 2008 for x64
Microsoft(R) Windows Server(R) 2008 R2 Datacenter, Microsoft(R) Windows Server(R) 2008 R2 Enterprise, Microsoft(R) Windows Server(R) 2008 R2 Standard, Microsoft(R) Windows Server(R) 2008 R2 Foundation and Microsoft(R) Windows(R) Web Server 2008 R2	Windows Server(R) 2008 R2
Microsoft(R) Windows Server(R) 2012 Datacenter, Microsoft(R) Windows Server(R) 2012 Standard, Microsoft(R) Windows Server(R) 2012 Essentials and Microsoft(R) Windows Server(R) 2012 Foundation	Windows Server(R) 2012
Microsoft(R) Windows Server(R) 2012 R2 Datacenter, Microsoft(R) Windows Server(R) 2012 R2 Standard, Microsoft(R) Windows Server(R) 2012 R2 Essentials and Microsoft(R) Windows Server(R) 2012 R2 Foundation	Windows Server(R) 2012 R2
Microsoft(R) Windows Server(R) 2016 Datacenter, Microsoft(R) Windows Server(R) 2016 Standard and Microsoft(R) Windows Server(R) 2016 Essentials	Windows Server(R) 2016
Windows(R) 7 Home Premium, Windows(R) 7 Professional, Windows(R) 7 Enterprise, Windows(R) 7 Ultimate, Windows(R) 8.1, Windows(R) 8.1 Pro, Windows(R) 8.1 Enterprise, Windows(R) 10 Home, Windows(R) 10 Education, Windows(R) 10 Pro, Windows(R) 10 Enterprise, Microsoft(R) Windows Server(R) 2008 Datacenter, Microsoft(R) Windows Server(R) 2008 Enterprise, Microsoft(R) Windows Server(R) 2008 Standard, Microsoft(R) Windows(R) Web Server 2008, Microsoft(R) Windows Server(R) 2008 Datacenter without Hyper-V, Microsoft(R) Windows Server(R) 2008 Enterprise without Hyper-V, Microsoft(R) Windows Server(R) 2008 Standard without Hyper-V, Microsoft(R) Windows Server(R) 2008 R2 Datacenter, Microsoft(R) Windows Server(R) 2008 R2 Enterprise, Microsoft(R) Windows Server(R) 2008 R2 Standard, Microsoft(R) Windows Server(R) 2008 R2 Foundation, Microsoft(R) Windows(R) Web Server 2008 R2, Microsoft(R) Windows Server(R) 2012 Datacenter, Microsoft(R) Windows Server(R) 2012 Standard, Microsoft(R) Windows Server(R) 2012 Essentials, Microsoft(R) Windows Server(R) 2012 Foundation, Microsoft(R) Windows Server(R) 2012 R2 Datacenter, Microsoft(R) Windows Server(R) 2012 R2 Standard, Microsoft(R) Windows Server(R) 2012 R2 Essentials, Microsoft(R) Windows Server(R) 2012 R2 Foundation,	Windows(R)

Formal name	Abbreviation
Microsoft(R) Windows Server(R) 2016 Datacenter, Microsoft(R) Windows Server(R) 2016 Standard and Microsoft(R) Windows Server(R) 2016 Essentials	
Microsoft(R) Internet Explorer 9.0, Internet Explorer(R) 10.0 and Internet Explorer(R) 11.0	Internet Explorer
Microsoft(R) Edge	Edge
Java Naming and Directory Interface	JNDI
Java(TM) 2 SDK, Standard Edition, Java(TM) 2 Platform, Enterprise Edition, Java(TM) Platform, Standard Edition and Java(TM) Development Kit	JDK
Java(TM) 2 Runtime Environment, Standard Edition and Java(TM) Runtime Environment	JRE
Microsoft(R) Visual Basic(R) for Applications	VBA
Microsoft(R) Visual Basic	Visual Basic
Microsoft(R) Visual Basic.NET	Visual Basic.NET
Microsoft(R) Visual Studio	Visual Studio
Microsoft(R) Visual Studio.NET	Visual Studio.NET
Microsoft .NET Framework	.NET Framework or .NET
Interstage Application Server Enterprise Edition, Interstage Application Server Standard-J Edition and Interstage Web Server	Interstage Application Server
FUJITSU Enterprise Postgres Advanced Edition (64bit)	AE or FUJITSU Enterprise Postgres Advanced Edition
FUJITSU Enterprise Postgres Standard Edition (64bit)	SE or FUJITSU Enterprise Postgres Standard Edition

Remarks: The symbols (R) and (TM) may be omitted in this manual.

1.4.3 FUJITSU Enterprise Postgres Conventions

The naming conventions for the FUJITSU Enterprise Postgres product names and functions used in the FUJITSU Enterprise Postgres manuals are shown below.

1.4.3.1 Server

The names used in the manuals in explanations regarding FUJITSU Enterprise Postgres functions are shown below.

Product name	Name used in manuals
FUJITSU Enterprise Postgres Advanced Edition (64bit) and FUJITSU Enterprise Postgres Standard Edition (64bit)	64-bit product

1.4.3.2 Client

The names used in the manuals in explanations regarding FUJITSU Enterprise Postgres client functions are shown below.

Product name	Name used in manuals
FUJITSU Enterprise Postgres Client (64bit)	64-bit product
FUJITSU Enterprise Postgres Client (32bit)	32-bit product

1.4.4 Abbreviations for Specific Terms



The following abbreviations are used in descriptions concerning Linux and Solaris:

- "UNIX system" is an abbreviation for FUJITSU Enterprise Postgres running under Linux or Solaris.
- "UNIX system files" is an abbreviation for files handled under Linux or Solaris.
- "UNIX system" is an abbreviation for a system configured for Linux or Solaris.

1.4.5 Symbol Convention

The symbols shown below are used in the manuals.

Symbol	Meaning
[]	<p>These symbols indicate characters displayed in a window or dialog box or keyboard keys.</p> <p>Examples: [Setting] dialogue box, [File] menu, [Item name], [OK] button, [Enter] key.</p>

1.5 Notes about Manuals

This section contains notes about the FUJITSU Enterprise Postgres operating environments and manuals.

- Images in figures

The FUJITSU Enterprise Postgres manuals contain figures showing printouts for FUJITSU Enterprise Postgres to provide the reader an idea of what the printouts look like, but since the figures are only examples, they are incomplete.

- Explanatory examples

Most of the examples of databases in the FUJITSU Enterprise Postgres manuals are modeled after inventory control databases of retail stores. The design and contents of the databases in the examples are fictitious and do not represent any real database.

- UNIX release version number

This system conforms to UNIX System V Rel4.2MP.

Chapter 2 Trademarks

- Internet Information Services, Microsoft, MS, MS-DOS, Windows, Windows Server, Visual Basic, Visual Studio and Microsoft .NET Framework are registered trademarks or trademarks of Microsoft Corporation in the U.S. and/or other countries.
- Oracle and Java are registered trademarks of Oracle Corporation and its subsidiaries and affiliated companies in the U.S. and other countries. Product and company names mentioned in this manual are the trademarks or registered trademarks of their respective owners.
- Linux is a registered trademark or trademark of Mr. Linus Torvalds in the U.S. and other countries.
- Red Hat, RPM, and all Red Hat-based trademarks and logos are registered trademarks or trademarks of Red Hat, Inc. in the U.S. and other countries.
- SUSE and the SUSE logo are registered trademarks of SUSE LLC in the United States and other countries.
- UNIX is a registered trademark of Open Group in the U.S. and other countries.
- Interstage, Systemwalker, PRIMECLUSTER, and FUJITSU Software Enterprise Postgres are trademarks or registered trademarks of Fujitsu Limited.

Other product and company names mentioned in this manual are the trademarks or registered trademarks of their respective owners.